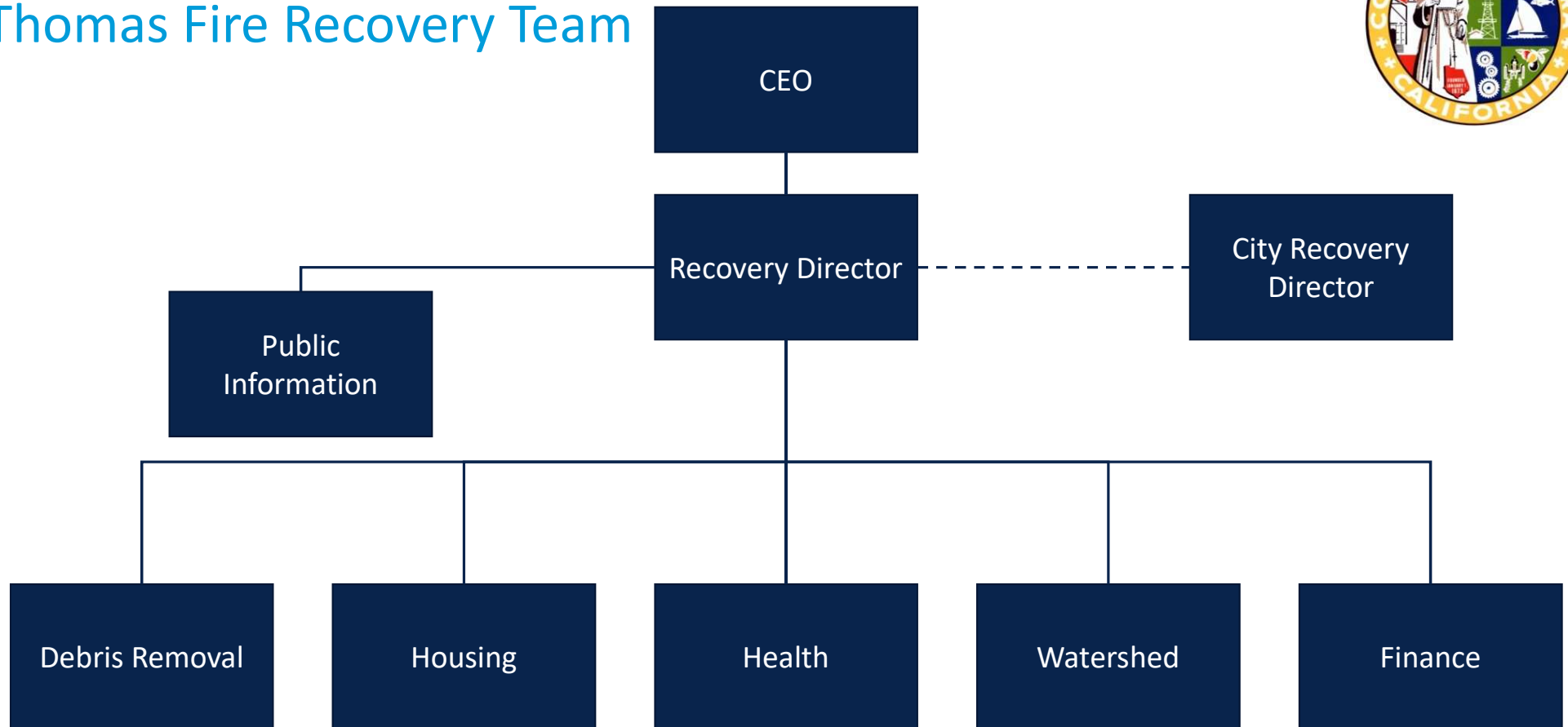


Thomas Fire Recovery After-Action Review



County of Ventura Thomas Fire Recovery Team





Identified Strengths

01. General Program

- ▶ Rapid Implementation of Unified Recovery Programs
- ▶ Swift Opening of Local Assistance Center (LAC)
- ▶ Completion of Calamity Claims Property Adjustments Within 4 Months

02. Finance

- ▶ Early Agreement to Share Multiple Recovery-Related Costs
- ▶ County OES Oversight Support of Federal Public Assistance Program Reimbursement Process

03. Human Services and Housing

- ▶ Rapid Establishment of the Housing Assistance Program
- ▶ Organization and Staffing of Local Assistance Center
- ▶ Successful Application for the California Wildfires National Dislocated Worker Grant

04. Watershed Debris Flows/Landslides

- ▶ Provisioning and Distribution of Sand Bags
- ▶ Creation and Distribution of Fire Debris Flow Information
- ▶ Successful Suppression of Oil Seep Fires

05. Debris Management and Reconstruction Support

- ▶ Use of the State CalRecycle Debris Removal Program
- ▶ Effective Processing of over 700 Right of Entry Forms
- ▶ Creation of Expedited Building Permit Review Process

06. Public Information

- ▶ Timely Creation of VenturaCountyRecovers Website in Both English and Spanish
- ▶ Common Branding and Dissemination of Recovery-Related Information

07. Healthcare

- ▶ Development of CA HOPE Team
- ▶ Distribution of More than 750,000 Protective Breathing Masks



Identified Areas of Improvement

01

Advanced Planning for Disaster Recovery

Establish a Recovery Program mission goals, objectives and roles in advance of the next disaster



- Incorporate a formal Recovery Program Plan as a section (Annex) within the County's Emergency Operations Plan (EOP)

02

Rapid Release of Damage Assessment Data

Release of information on damaged structures



- Create and implement policies and protocols for making damage assessment information available to property owners in a timely and confidential manner

03

Victim Case Management Information

Information critical to the prediction and provisioning of meaningful and impactful recovery support



- Develop a disaster victim data collection strategy
- Develop MOUs for sharing core information

04

Language Translation of All Materials

Recovery information released simultaneously in multiple languages facilitated by personal translation



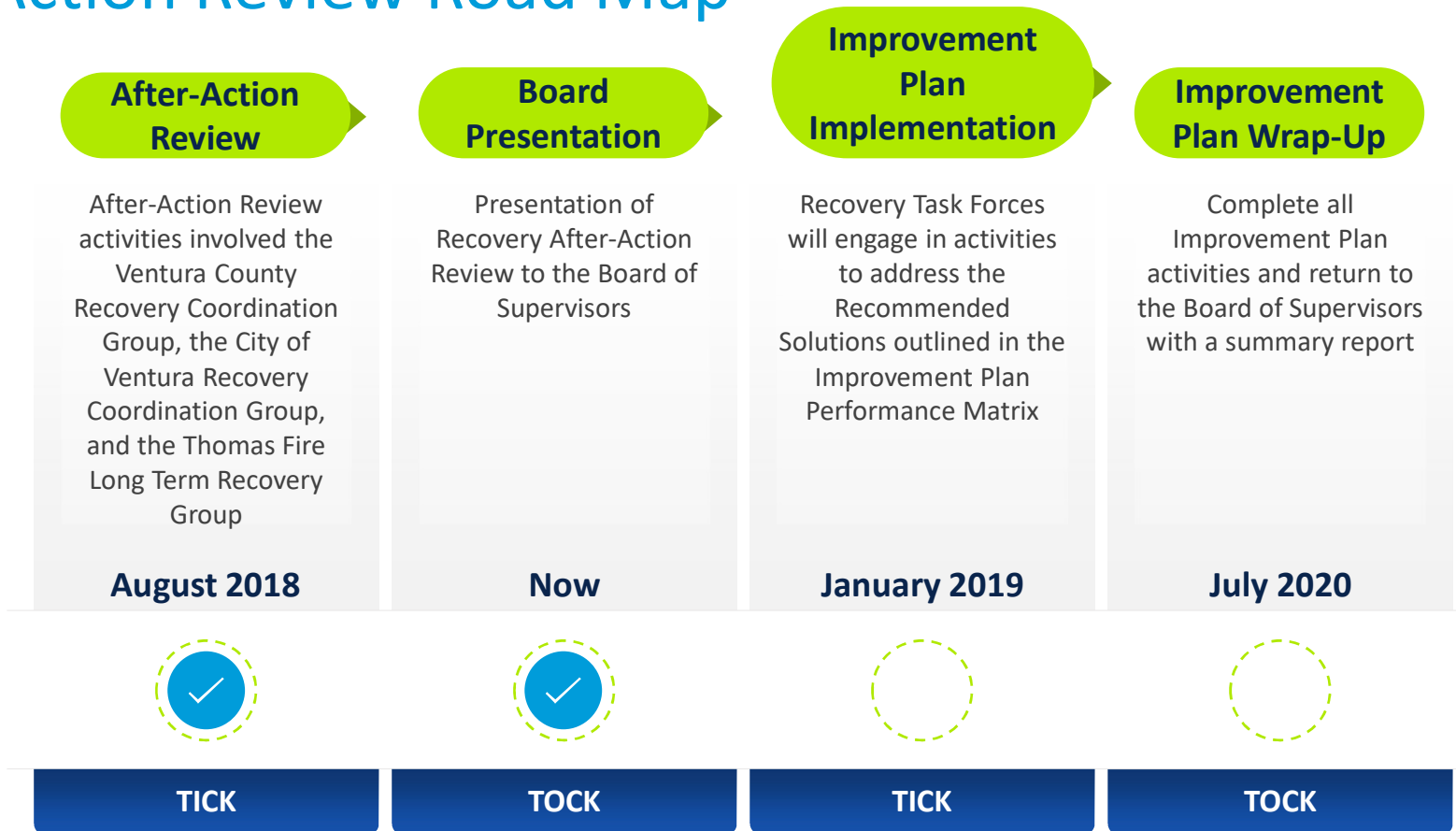
- Expand bilingual PIO resources
- Maximize use of the 2,000+ bilingual-certified County employees

Improvement Plan Performance Matrix

Outlines Recommended Solutions for each Area of Improvement, Agency(ies) responsible for leading implementation, and estimated completion time.

Improvement Plan Performance Matrix				
ISSUE	RECOMMENDED SOLUTION	LEAD COORDINATION AGENCY(IES)	ESTIMATED COMPLETION TIMELINE	PERFORMANCE STATUS
General Program, including Local Assistance Center				
Advance Planning for Recovery Program and Program's Mission, Goals, Objectives and Roles	Incorporate a formal Recovery Program Plan as a section (Annex) within the County's Emergency Operations Plan (EOP)	CEO	Mar-19	In-Progress
Pre-Disaster Recovery Training	<ol style="list-style-type: none"> 1. Identify resources that provide recovery training and/or certifications on the FEMA National Recovery Framework and develop a training plan that is offered to all County employees 2. Champion staff attendance at county-wide disaster recovery planning programs 	CEO; HSA; VCOES	Mar-19	Planned
Comprehensive and Sharable Victim Case Management Information	<ol style="list-style-type: none"> 1. Develop a disaster victim data collection strategy and a plan to capture sharable victim information, in a secure manner, early on in such venues as shelters and the Local Assistance Center (LAC), among other venues 2. Develop MOUs for sharing core disaster victim information with specified recovery agencies and stakeholders 3. Identify and enhance opportunities to collaborate with organizations for information distribution and disaster victim/ 	CEO; HSA; VCOES	Jul-20	Planned

After-Action Review Road Map



Thank you to all Contributing Organizations

